

# Interactive Portfolio Surveillance<sup>SM</sup>

## Portfolio analytics and surveillance services

### Identify, monitor, and mitigate your portfolio exposure

Market participants demand accurate and prompt information on mortgage loan pools, servicer, and other counterparty performance. Ushering in a new generation of online data insights, our *Interactive Portfolio Surveillance* (IPS) tool assists in your efforts to identify and control exposures while allowing you to monitor and mitigate losses and maximize portfolio performance. By aggregating, scrubbing, and standardizing data, IPS simplifies thousands of data elements to quickly provide the information you need to succeed.

### Benefits of IPS

- **See entire performance picture.** IPS offers a detailed loan/servicer/portfolio analysis and presents the information in meaningful ways. Examine performance from portfolio through loan level.
- **Gain efficiency.** IPS translates data into actionable information and supports in-house or external surveillance efforts. Your staff can focus on analysis and decisioning rather than data acquisition, normalization, and report production. As a result, you will be able to reduce infrastructure and middle/back-office functions.
- **Ease of deployment and support.** IPS is a web-based solution that does not require special software or installation. Gain access to IPS with only an internet connection.

With the goal of increasing transparency and access to critical information, IPS quickly and consistently provides sound data and analysis. IPS allows you to:

- View a comparative analysis of loans, servicers, securities, and portfolios
- Select key performance indicators to analyze trends, stratifications, and loan subsets
- View the current state of all loans and securities within a portfolio
- View results in graphical formats
- Download and export graphs, charts, and loan-level data with a single click of your mouse

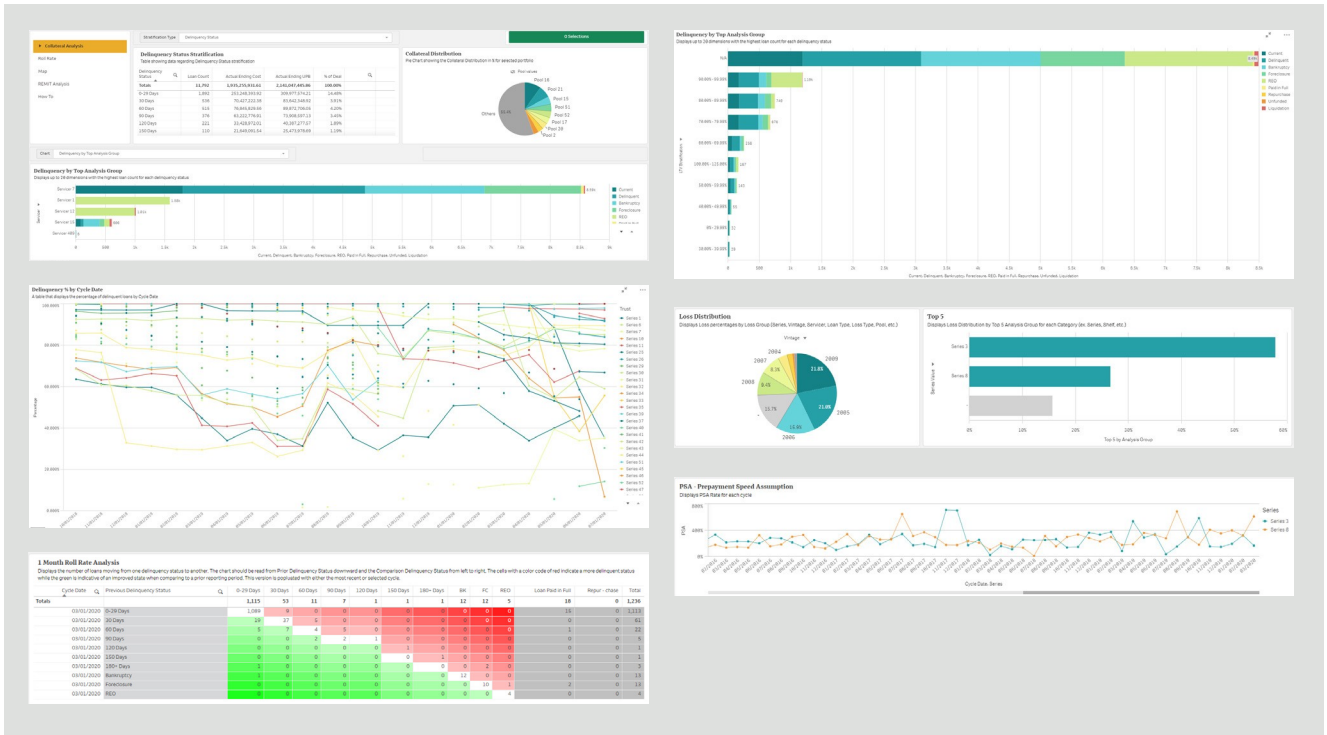
### Customized solutions

Computershare will partner with you to develop a customized solution, including:

- Servicer monitoring
- Comparative analysis
- Timeline management
- Loan performance triggers
- Targeted campaign tracking
- Dynamic loan grouping
- Risk layering
- Loan/portfolio profitability tracking
- Loan registry/life-cycle tracking
- Management and risk reporting

# Learn more

To learn more about the *Interactive Portfolio Surveillance* tool, sign on to [crm.computershare.com](http://crm.computershare.com) or contact your Relationship Manager



Computershare Trust Company, N.A. does not provide legal, tax, or accounting services for its customers. Customers should always consult their own professional tax, accounting, and legal advisors in connection with any effort to qualify a particular transaction for favorable treatment under applicable tax laws and regulations.